



Build competence.  
Keep records tidy. See  
progress at a glance.

# Building Competence: Your Training & Learning Solutions Guide

Training that sticks. Built around your real risks.

Accredited training delivered through client learning portals with the support of a consultancy partner.

eLearning • Blended • Virtual • Classroom

---

☎ 02922 800 000   ✉ [enquiries@ligtas.co.uk](mailto:enquiries@ligtas.co.uk)   🌐 [ligtas.co.uk/training](https://ligtas.co.uk/training)

# If training feels like a tick-box, it'll be treated like one.

Most organisations don't lack training. They lack a joined-up system.

Common training system pain points we hear:

- Induction varies by manager, site, or shift so new starters get different messages.
- Training records, certificates and completion data often sit in different places, making reporting scattered and difficult to manage.
- Certificates and refresher dates get chased manually, until it becomes a scramble.
- Training feels generic, so people switch off and nothing changes day to day.
- Leaders can't see who's competent for what across roles and sites.
- As you grow, learning plans get messy fast and no one owns the "master version".
- When key people move on, the whole setup can fall apart.

We help you move from one-off courses to an ongoing programme, with clear ownership, clear reporting, and learning that relates to the work people actually do.

And because it's built to grow with you, you can add to it over time, strengthening capability and resilience as your organisation changes.



# When training is shaped by real risk, behaviour changes.

Training lands better when it's built from what's happening in your workplace not what a generic slide deck assumes.

That's why we run a simple loop:

## Consult

Identify the real risks, gaps, and on-the-ground behaviours.

## Train

Turn that insight into practical skills, habits, and confidence.

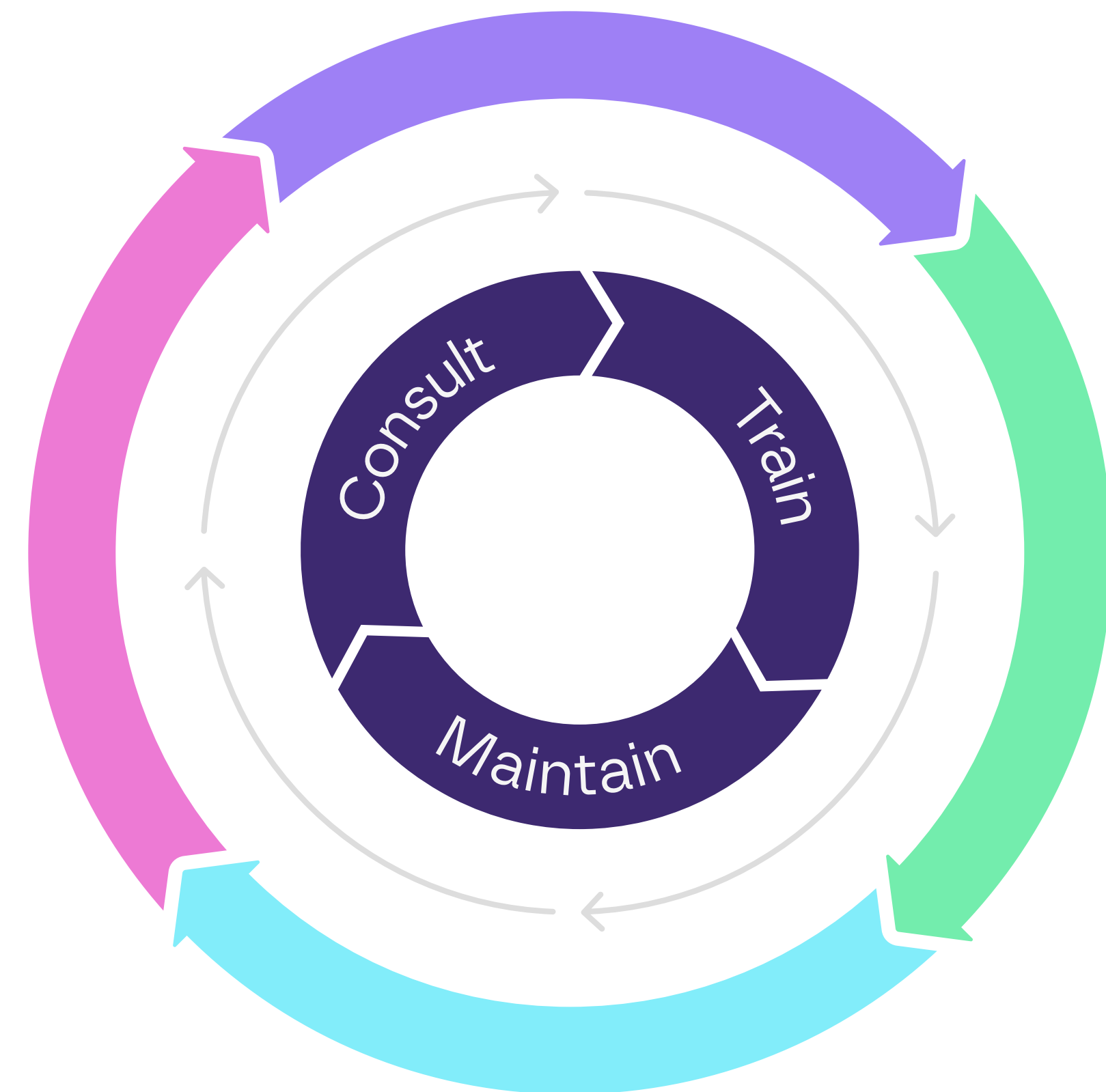
## Maintain

Review, refresh, and report so competence stays current as your sites, people, and risks change.

It's the difference between:

“We delivered training” and “We delivered a structured learning experience that drives measurable improvement and reduced risk”.

And because the loop continues, you're not starting again every year, you're building capability that grows with the business.



# Your Client Learning Portal

## One place for training, records, and competence.

This is where training starts to feel joined-up and far easier to manage.

We create a branded client learning portal for your organisation, giving your teams one clear place to access learning, follow their pathway, and keep training records visible. It helps bring structure and consistency to training, while making it easier for managers to track progress and maintain standards across teams.

The result is simple: less chasing, less guesswork, and more confidence that training and competence are visible, up to date, and easy to evidence.

**Get in touch** to book a demo and see what a client learning portal could look like for your teams.

With records, competence and reporting in one place, delivery becomes the easy part, here are the learning options we offer.

## What your portal can include

**Branded landing page and login** for your team.

**Role-based learning plans** by job role, site, and risk exposure.

**A consistent induction pathway** for every new starter.

**One library** for key policies, procedures, and supporting materials.

**Automated reminders** for refreshers and renewals.

**Dashboards** showing progress, completion, and certificates.

**Evidence packs** for audits, tenders, and client assurance.

---

# Choose what suits your teams and keep oversight consistent.

We'll help you pick the right mix. For many teams, eLearning is the quickest way to build coverage fast, with consistent standards across every site.



---

## Online (eLearning)

- Self-paced learning people can complete around shifts.
- Real-time progress tracking and management reporting.
- Great for induction, refreshers, and multi-site rollouts .

---

## Blended

- Online learning plus scheduled virtual sessions and video content.
- Keeps flexibility, while adding live interaction and discussion.

---

## Virtual

- Live trainer-led sessions, without travel.
- Interactive and supportive, a “classroom feel”, anywhere.

---

## Classroom

- In-person delivery at your premises, a chosen venue, or our facility.
- Best when you need deeper discussion or leadership sessions.

# Who it's for and why it matters

It's not just for H&S. It's for anyone responsible for people, standards, and day-to-day delivery.

If you're in HR/People, you need consistent induction and clear learning pathways.

If you're in Operations or Facilities, you need teams who can work safely, follow procedures, and respond properly when something goes wrong.

If you're a leader, you need confidence that competence is real and evidence is easy to produce.

## Why it matters:

When training sits across different providers and platforms, you get gaps. Not always obvious ones, the annoying, risky kind. Different induction messages, inconsistent refreshers, scattered certificates, and reporting that doesn't match up.

A joined-up system fixes that.

With one partner and one clear programme, you can:

- give every new starter the same baseline (no matter the site, shift, or manager).
- tailor learning plans by role and risk.
- keep reporting and certificates in one place.
- add modules over time as the business grows, so capability grows with it, not behind it.



# What we deliver (a snapshot)



## NEBOSH qualifications

For teams who need deeper technical competence and recognised qualifications.

**Examples:** General Certificate, International General Certificate, Fire Safety, HSE Award in Risk Assessment, Incident Investigation and more.



## IOSH Training

Practical training that's easy to roll out across teams and management layers.

**Examples:** Managing Safely, Working Safely, Safety for Executives and Directors.



## Workplace courses (online, virtual, blended, and classroom)

Short, role-relevant courses to build day-to-day safe working habits.

**Examples:** Fire Marshal, Legionella Awareness, COSHH, DSE, Manual Handling, Working at Height, Confined Space, CDM Awareness and more.

## Not sure what you need?

That's normal. We'll help you map learning to roles, risks, and sites, then build a programme that's consistent, trackable, and easy to maintain.

[Get in touch](#) →

---

# Already have an LMS?

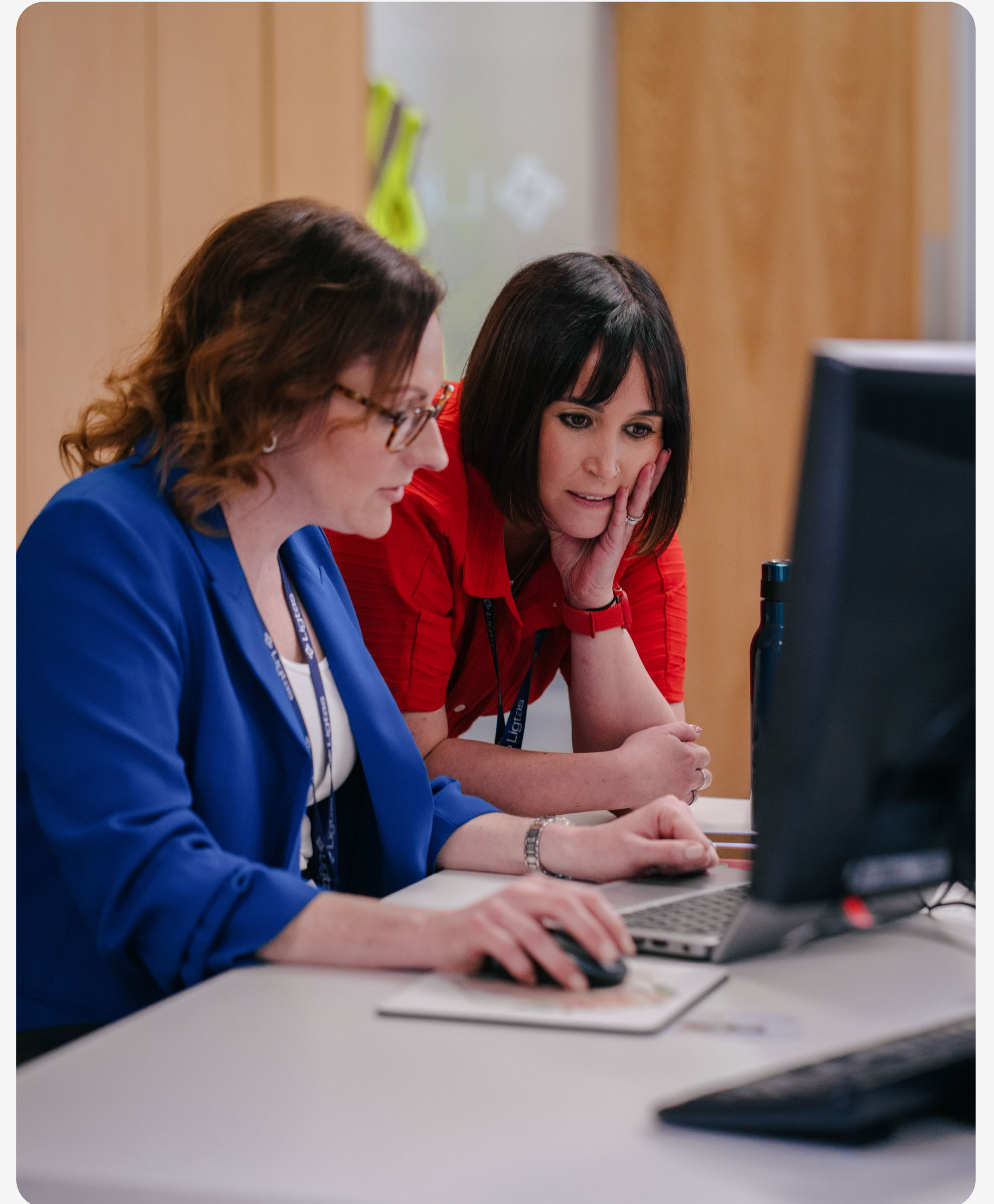
Good. We can plug into it.

If you already use an LMS but want stronger training capability (and cleaner reporting), we can help.

Here's the firm promise:

- We can supply licensed eLearning training files that you can host on your own LMS
- We can tailor content where needed (brand, tone, workplace scenarios)
- We can standardise course naming, certificates, and reporting fields so it all sits in one reporting structure
- We can support roll-out plans, induction pathways, and refresher schedules, so it doesn't become a "set and forget" library

**Licensing:** Get in touch and we'll talk through options and formats.



Stay up to date with insights, training opportunities, and webinars:

# Why Ligtas?

A training partner you can actually rely on.

Why organisations choose Ligtas:

- NEBOSH Gold Learning Partner
- IOSH Approved Training Provider
- ISO certifications (9001, 14001, 27001, 45001)
- Cyber Essentials
- 90–100% average pass rates
- Fully managed training, led by a designated Account Manager

## What happens next?

- 1 We learn your risks, roles, and what “good” looks like.
- 2 We build a training plan; via a client learning portal or content for your LMS.
- 3 We roll it out, track progress, and keep it current.

## Talk to us

 02922 800000  [enquiries@ligtas.co.uk](mailto:enquiries@ligtas.co.uk) 